

RFID card reader

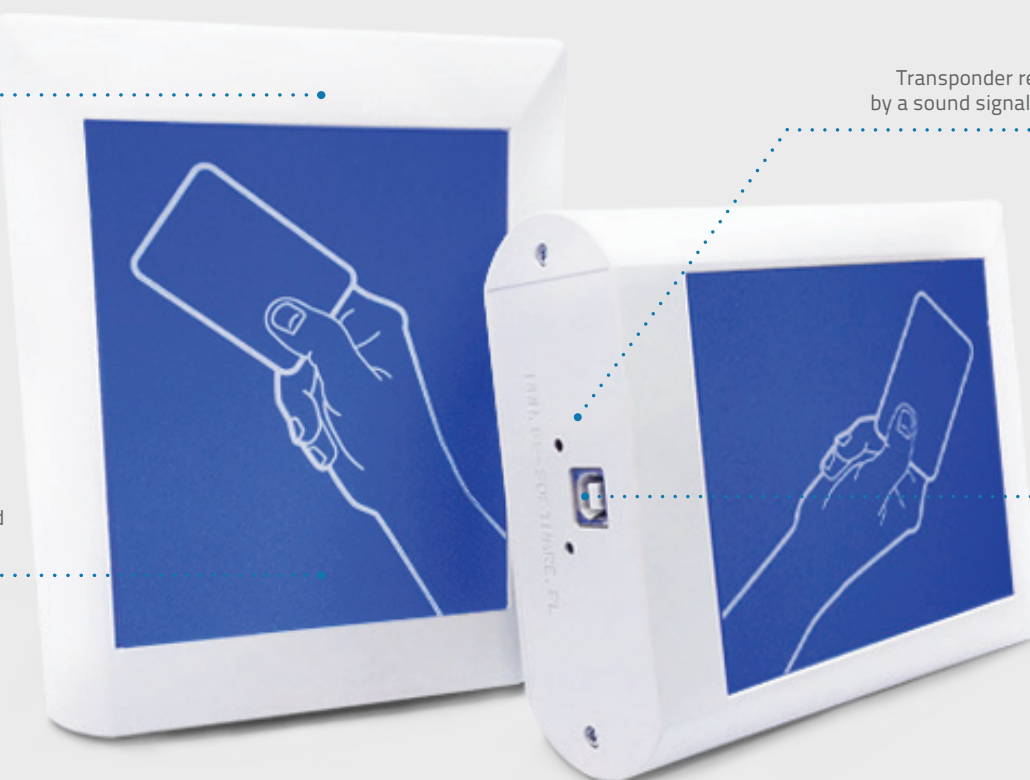
Desktop RFID card reader

Solid housing

Transponder readout is indicated by a sound signal and diode lighting

Cooperation with Unique 125 KHz standard proximity cards

USB connector

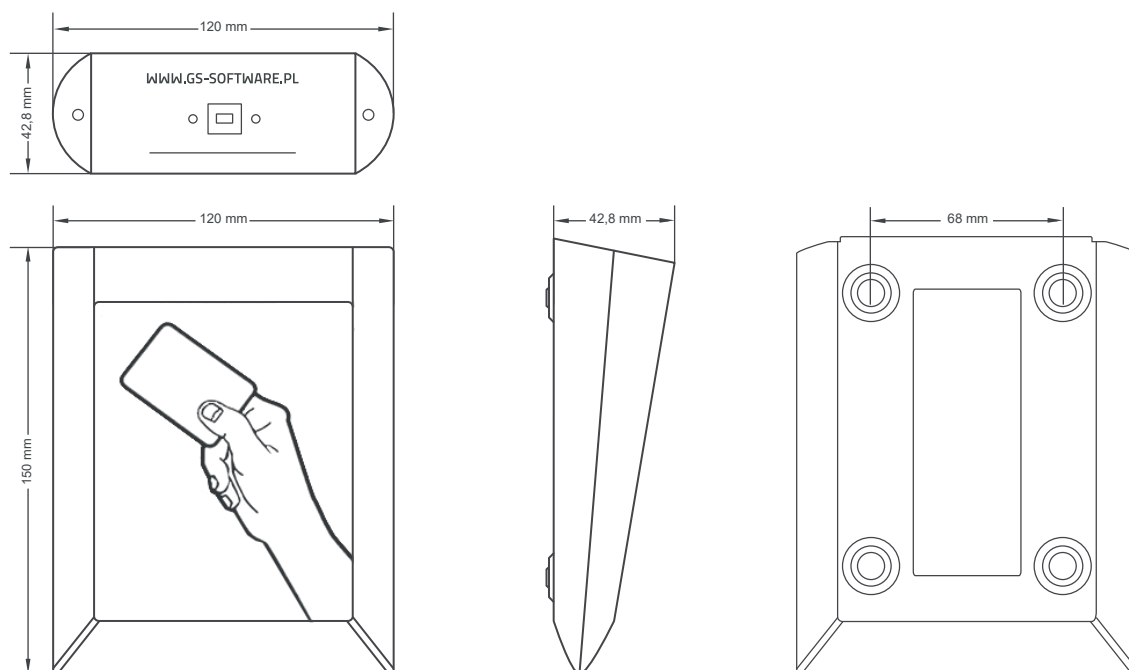


Desktop RFID card reader

TECHNICAL SPECIFICATION

CATEGORY	PARAMETER
CHARACTERISTIC	
Accordance	USB 1.0/1.1
Compatibility	USB 2.0, 3.0
Connector	USB type A, B
Signals LEDs	Yes
Sound signal	Yes
Effective distance to read transponder	A few centimeters
POWER SUPPLY	
Power type	From the USB port
Data format	
Output data format	Constant
OPERATING CONDITIONS	
Operating temperature	From -10 to 50 C
Storage temperature	From -25 to 70 C
Ambient Relative Humidity	5 to 95 RH
IP Rating	IP40
MECHANICAL CHARACTERISTICS	
Case material	ABS (UL 94 HB)
Dimensions	150x120x42,8mm
Weight	0,20 kg

DIMENSIONS OF THE READER



* The manufacturer reserves the right to make changes concerning the product characteristics. Products parameters can be changed without notice.
 GS Software Sp. z o.o. ul. Ogłęczyzna 20, 31-589 Kraków. More information on www.gs-software.pl